



****AVAILABLE JULY 2026** **FURNISHED****
****2ND FLOOR APARTMENT**** This great, two bedroom apartment is ideally located very close to Newcastle's famous Quayside. Found on St Ann's Close, this well presented property boasts a pleasant outlook, spacious bedrooms and is conveniently situated close to all the amenities of Newcastle City Centre.

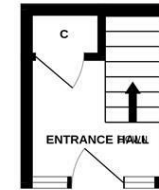
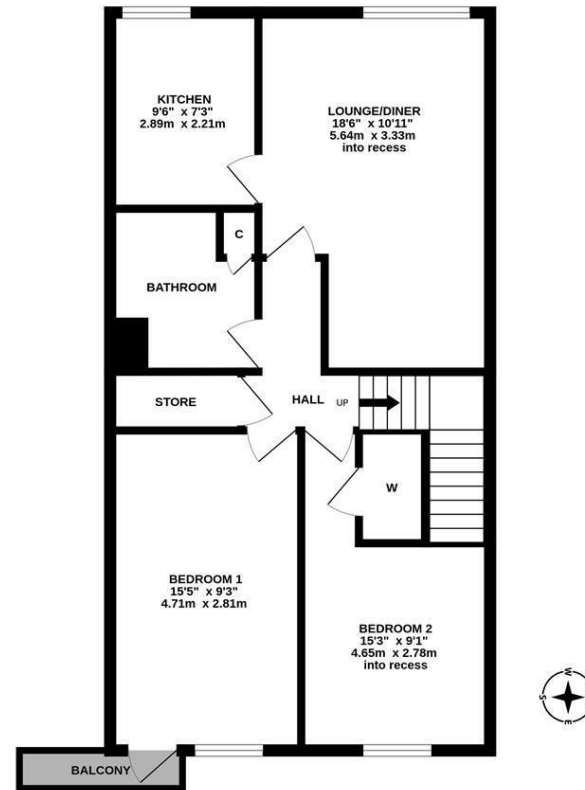
In excess of 700 Sq ft and lift access, set over two floors the accommodation briefly comprises: entrance hallway accessed via the 3rd floor of the building, with store cupboard and stairs leading to accommodation on the lower 2nd floor; two 15ft double bedrooms with a pleasant outlook over, bedroom one also with door leading to a small balcony; separate cupboard ideal for storage; modern bathroom WC with three piece suite; spacious 18ft lounge/diner with nice green views; fitted kitchen with appliances and tiled splash-backs. Externally there is permit parking available on street.

Available 6th July 2026 | £900pcm | 707 Sq ft (65.6 m2) | Purpose Built Block | Two Double Bedrooms | 18ft Lounge/ Diner | Kitchen | Bathroom WC | Good Storage Space | Excellent Location | Permit Parking | Lift Access To All Floors | Pleasant Outlook | Furnished | DG | District Heating | Council Tax Band: A | EPC Rating: C



2ND FLOOR:
650 sq.ft. (60.4 sq.m.) approx.

ENTRANCE FLOOR (3RD):
56 sq.ft. (5.2 sq.m.) approx.



TOTAL FLOOR AREA: 707 sq.ft. (65.6 sq.m.) approx.

Whilst every attempt has been made to ensure the accuracy of the floorplan contained here, measurements of doors, windows, rooms and any other items are approximate and no responsibility is taken for any error, omission or mis-statement. This plan is for illustrative purposes only and should be used as such by any prospective purchaser. The services, systems and appliances shown have not been tested and no guarantee as to their operability or efficiency can be given.
 Made with Metropix ©2024

£900 PCM

IMPORTANT NOTE: These particulars and the descriptions and measurements herein do not constitute representation and whilst every effort has been made to ensure accuracy, this cannot be guaranteed.

